

Krackeler Scientific

Botanicals Brochure

Cannabis

CHROMATOGRAPHY • SAFETY
CONTAINERS • GLASSWARE
MEASUREMENT • WEIGHING
CHEMICALS • CONSUMABLES

EQUIPMENT • EVAPORATION
ANALYTICAL STANDARDS • PCR
SOLVENTS • HOMOGENIZATION
MOISTURE ANALYSIS • GLOVES



Contents

www.krackeler.com



Krackeler Scientific, an Introduction:

- *Leading, full-line distributor of laboratory supplies.*
- *Based in Albany, NY.*
- *Since 1951.*

Just like any workplace, the key to successful cannabis testing is a synergistic relationship between all elements involved.

Whether your lab is well established or just off the ground, what Krackeler can offer you is a **single supply source for necessary laboratory elements** such as equipment and instrumentation as well as analytical standards, consumables, labware, and chemicals—all the moving parts that create a successful operation.

As a local, family-owned business with a hands-on, dedicated Sales Team, we have the ability to work one-on-one with our customers to help in not only finding the right products to fit your lab's requirements and budget, but to also assist with meeting strict industry regulations so you can focus on your work and growing your business.

If you are interested in learning more, please feel free to directly contact a member of our Sales Team or Krackeler Customer Service at 800-334-7725. We look forward to hearing from you!

Contact

Krackeler Scientific
800-334-7725

57 Broadway
Albany, NY 12202

www.krackeler.com
sales@krackeler.com

The products in this catalog are a representation of our full product portfolio—if you don't see what you need, go to www.krackeler.com or contact us for assistance!

See back cover for a look at our vendor partners!

Contents

2 Analytical Standards

An extensive catalog of high-quality certified reference materials.

3 Sample Prep

Tubes, dishes, pipettes, and more ensure the safety of your samples.

4 Weighing

The most trusted scales and weighing accessories for the utmost in accuracy.

5 Equipment

A wide variety of laboratory equipment including centrifuges, incubators, mixing equipment, cold storage, and homogenizers.

6 Chemicals

Stock your lab with the solvents and reagents you need.

7 Labware

Glass and plastic beakers, flasks, and cylinders. Starter packs too!

8 Safety

Promote safety in the workspace with protective apparel and gloves, as well as safety glasses and eye wash stations.



Our portfolio includes

a wide variety of high-quality certified reference materials from the most trusted manufacturers, including standards for environmental, pharmaceutical, clinical, food & beverage, forensic, and petrochemical testing.

Please contact us with any questions—we're happy to assist in finding the right analytical standards for your laboratory!



We also offer custom standards!

SPOTLIGHT Cerilliant

Millipore Sigma

Cerilliant® certified solution standards are manufactured and tested to the highest industry standards and traceable to SI units minimizing the traceability chain and improving laboratory accuracy.

SPOTLIGHT

QuEChERS

Do you use QuEChERS?

We carry a wide range of Agilent Technologies products for every step of the QuEChERS sample preparation process!



Agilent Technologies

Sample Prep

www.krackeler.com

Sample Preparation

is an integral step in the testing process. Proper sample preparation solutions guarantee the reproducibility of your results, all while streamlining your workflow and saving valuable time.

Krackeler Scientific

is your source for sample preparation supplies. We carry an extremely wide range of vendors as well as multiple options & sizes for most products—this is just a small sample of what we offer!



CELLTREAT Centrifuge Tubes

Conical, graduated sterile polypropylene tubes with flat screw caps.



BrandTech Bottletop Dispensers

Compatible with most reagents, Dispensette® S Bottletop Dispensers are simple to clean & calibrate. Optional recirculation valve reduces splashing & conserves reagents.



KrackelerBrand Petri Dishes

Economical & sturdy, polystyrene, sterile.



KIMAX® Glass Petri Dishes

Reinforced beaded edges resist breakage.



Globe Scientific Sample Containers

Disposable HDPE containers ideal for sample collection and storage.

Stackable, with snap-on lids.



BelArt Measuring Scoops

Rigid & smooth molded polypropylene scoops in six sizes.



Globe Scientific Disposable Funnels

Economical & lightweight funnels made of transparent polystyrene or translucent polypropylene.



CELLTREAT Serological Pipets

Supplied sterile & individually wrapped.



Globe Scientific Wash Bottles

Plain wash bottles are LDPE with white screw cap. Available in several sizes.

Pre-printed 500mL LDPE bottles meet the latest requirements of GHS and OSHA HAZCOM 29 CFR 1910.1200.



balance is
everything.



Achieving the highest quality
results relies on

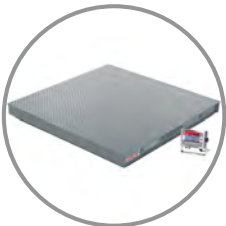
**accurately weighing
your samples.**

OHAUS®



cultivating scales

OHAUS Explorer high performance balances combine intelligent performance with intuitive operation, expanding their modern features and design to offer unmatched functionality.



process scales

Designed to minimize distortion under heavy loads and ensure years of dependable performance, VX floor scales come complete with a durable T32XW washdown indicator. With RS232 interface, high-visibility backlit LCD display, counting function & easy-to-operate positive feedback keys.



direct selling scales

Designed for a wide range of Legal-for-Trade applications, the Class II and Class III certified SJX balances feature superior overload protection, large backlit display, fast stabilization time, multiple weighing units, application modes & connectivity options.

The standard for precise weighing.
Krackeler offers the entire range of OHAUS products, including additional balance models with varied capacity & readability.



weighing accessories too!

Equipment

www.krackeler.com



KRACKELER
Scientific

Krackeler Carries an Extensive

array of laboratory equipment to suit any application. Choose from top-of-the-line vendors as well as niche brands that are breaking the mold!

Contact Your Sales Representative

or Krackeler Customer Service at 800-334-7725 for help in getting the exact piece of equipment to meet your specific needs.



Labconco High Performance Fume Hoods

Personal protection. Shop Labconco laboratory fume hoods & biosafety equipment! Customizable configurations conform to any safety need & space limitation—including explosion proof models for potentially flammable atmospheres.

Built-in exhaust blower options mean NO hook-up needed!



Need ventilation?

BrandTech vacuum pumps are an ideal accessory for your Labconco fume hood.

BRANDTECH
SCIENTIFIC, INC.



Built-in
exhaust
blower!

LABCONCO

KRACKELER SCIENTIFIC | CANNABIS

MILLIPORE SIGMA

chemicals: essentials for every laboratory.

Does your shopping list include Acetone, Heptane, N-Butane, Toluene, Acetonitrile, Hexane, Pentane, Ethanol, Isopropyl Alcohol, Ethyl Acetate, Methanol, or Propanol?

We have it—in a variety of grades, sizes & packaging options.

As an Authorized Distributor, Krackeler is proud to offer a complete MilliporeSigma chemical portfolio of solvents, reagents, media & supplements, salts, buffers, and more.

For assistance in finding the right chemicals for your application, contact your Sales Representative or Krackeler Customer Service at 800-334-7725.

MILLIPORE SIGMA

Authorized Distributor

spotlight: Ethanol for winterization.

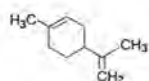
The winterization process further stabilizes and purifies your product by removing fats and waxes from the plant, increasing its quality and value.

After the initial extraction procedure, winterization is achieved by dissolving the extract in a solvent solution (ethanol is the most common), freezing the mixture, and then filtering out the waxes.

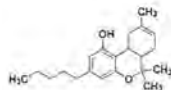


Test For:

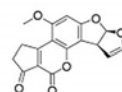
Terpenes



Cannabinoids



Mycotoxins



Low form borosilicate glass beakers with double capacity scales. Available in sizes from 10mL to 4L, as well as a convenient starter pack.



Borosilicate glass cylinders calibrated to deliver with durable white ceramic enamel scale. Choose from 10mL to 2L capacities.



Heavy duty autoclavable polypropylene beakers reduce breakage and are ideal for all general laboratory applications.



Beakers, flasks, cylinders,
tubes, bottles, vials, jars, carboys,
jugs, dishes, plates, microscope
slides, cover slips, pipet tips, PCR
consumables...and all the racks
and storage solutions
to organize it all.

Autoclavable,
chemically resistant
polypropylene cylinders
with wide rim and
tapered spout for easy
filling and pouring.



Graduated borosilicate glass bottles with large opening, no-drip pour lip, and large writing area. Available in a variety of capacities and cap options.



Clear and amber glass chromatography and sample vials in a wide array of sizes and configurations to suit any laboratory application!



Economical, versatile narrow mouth Erlenmeyer flasks with white enamel scale in sizes from 25mL to 6L, plus a convenient starter pack.



Amber glass bottles protect contents from UV rays and are ideal for light-sensitive products. Available in many sizes and with glass or plastic droppers.



invest in safety.

1

Keep personnel cool, clean & comfortable while promoting safety.

2

Protect valuable products, samples & environments.

3

Ensure compliance to workplace safety regulations & protocols.

Protective garments & other laboratory safety supplies enhance workplace effectiveness by keeping employees safe and comfortable, therefore optimizing your lab's output and productivity.

Krackeler offers a broad assortment of disposable & reusable garments such as gloves, lab coats, coveralls, face masks, bouffants, shoe/boot covers, and more to provide the correct level of protection for the wearer and your facility.

Our comprehensive selection includes solutions for the disposal of broken glass, sharps, and biohazardous waste as well as emergency stations in the case of an accident. We have laboratory-grade cleaning supplies, too!

We guarantee you'll find the right supplies to meet your requirements & budget. Sizes up to 6X!



Apparel

- Lab Coats
- Coveralls
- Shoe Covers
- Bouffants
- Face Masks
- Beard Covers
- Frocks
- Aprons

Gloves

- Nitrile Gloves
- Latex Gloves
- Vinyl Gloves
- Chloroprene Gloves
- Cryo Gloves
- High-Temperature Gloves

Eyes

- Safety Goggles
- Safety Glasses
- UV Blocking Eyewear
- Lens Cleaning Stations
- Emergency Eye Wash Stations

Lab Safety

- Broken Glass Disposal
- Biohazardous Waste Disposal
- Sharps Collection
- Pipet Tip Disposal



Vendor Partners

Krackeler Scientific offers thousands of products from the most trusted brands.

Chemicals/Media

Avantor
Labchem
MilliporeSigma
Pharmco
Ricca

Chromatography

Agilent Technologies
Finneran
Hamilton
National Scientific
Precision Sampling
Restek

Equipment

Barnstead
Benchmark Scientific
Bertin
Boekel
Brandtech
Branson
Control Company
Crystal Tech
Drummond Scientific
Eppendorf
Glas-Col Apparatus
Hettich
Humbolt Manufacturing
KNF Neuberger
Labconco
New Brunswick
Ohaus
Orion
Rainin
Thermo Scientific
Tuttnauer
UVP
Vitalab
W.W. Grainger

Glassware

Chemglass
DWK Life Sciences
Erie Scientific

Microbiology

BD Microbiology Systems
Brew Plate
Hardy Diagnostics

Plasticware

Bel-Art Products
Celltreat Scientific
Dynalon
Globe Scientific
Heathrow Scientific
Nalgene/Nunc

Safety

AlphaPro Tech
Grainger
Kimberly Clark
Johnson and Johnson
Microflex
SW Safety

Standards

Absolute Standards
Anachemia Chemicals
Cerilliant
Chem Service, Inc.
High Purity Standards
SPEX CertiPrep
Supelco
Ultra Scientific

This is a partial manufacturer list.

For a complete list of Krackeler Vendor Partners,
visit krackeler.com/catalog/brands or contact
your Sales Representative.

